

iSCREEN™  
**ORAL FLUID TEST**  
DRUG SCREEN CUBE

PROCEDURE CARD

Allow the kit and specimen to come to room temperature (18°C-30°C/65°F-86°F) prior to testing.  
AVOID PLACING ANYTHING IN THE MOUTH 10 MINUTES PRIOR TO TESTING.

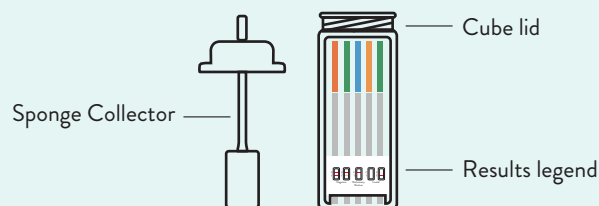
For detailed instructions, please read the package insert. Intended for *in vitro* diagnostic use.

### Kit Contents

25 iSCREEN™ Oral Fluid Test Drug Screen Cubes  
25 Sponge Collectors  
5 Additional Sponge Collectors  
One (1) Package Insert  
One (1) Procedure Card

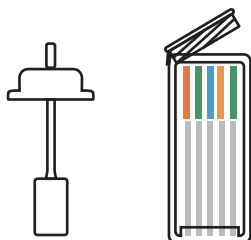
Store at 4°C-30°C (39°F-86°F) in the original sealed pouch. Do not freeze.

### Cube Components

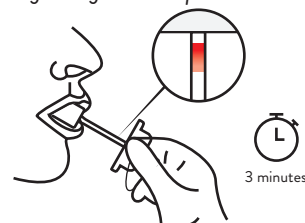


## Collection and Testing Procedure

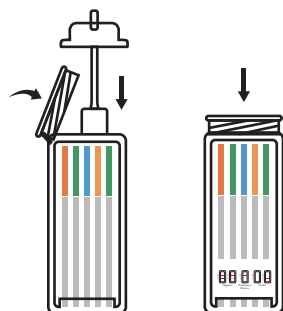
- 1 Remove the test cube and the sponge collector from the foil pouch by tearing at the notch. Place the test cube upright on a level surface.



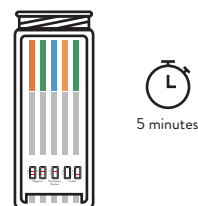
- 2 Put the sponge end of the collector in your mouth and move it around (under the tongue, on the cheeks) to collect oral fluid for about 3 minutes until color on saturation indicator strip appears RED in the indicator window. If color on saturation indicator has not turned red at 7 minutes, repeat the collection using one additional sponge collector provided, beginning with Step 1.



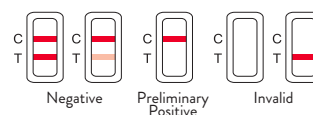
- 3 Open the test cube and place the saturated oral fluid collector inside the test cube. Press the sponge collector down firmly until it reaches the bottom of the test cube then tightly close the cube lid. Keep test cube upright on flat surface and follow Step 4.



- 4 Read drug test results at 5 minutes. Do not read after 5 minutes.



### Drug test result interpretation



Distributed by Instant Technologies, Inc. Portsmouth, VA 23704 USA  
Made in China

© 2023 Abbott. All rights reserved. All trademarks referenced are trademarks of either the Abbott group of companies or their respective owners.

Rel.: 2022/12/02