

---

## **Clinical Case Study - July 2019**

**Right maxillary fractured molar and replacement by an implant after GBR with biphasic calcium sulfate and vertical sinus lift.**

*Surgery by Stephane Berg, DDS*

52 years old female presented with fractured right maxillary first molar in September 2018. It was decided to proceed with extraction and GBR with biphasic calcium sulfate cement (Bond Apatite®, Augma Biomaterials Ltd) in order to avoid the resorption of the alveolar bone and to maintain the crestal width. The exposed graft was covered by collagen sponge secured in place. On March 2019, the regenerated bone allows the placement of an implant in conjunction with a crestal sinus lift and sinus filling by biphasic calcium sulfate cement (Bond Apatite®).

---



Periapical radiographic image before extraction



Clinical appearance before  
extraction



Clinical appearance after extraction





Bond Apatite syringe Sterile gauze  
and collagen sponge ready to use  
Prior to augmentation



Bond Apatite® Injected tin to place



Bond Apatite® Bone graft cement In  
place



The graft is well compacted In place  
by placing a sterile gauze above and  
applying firm pressure for 3 seconds



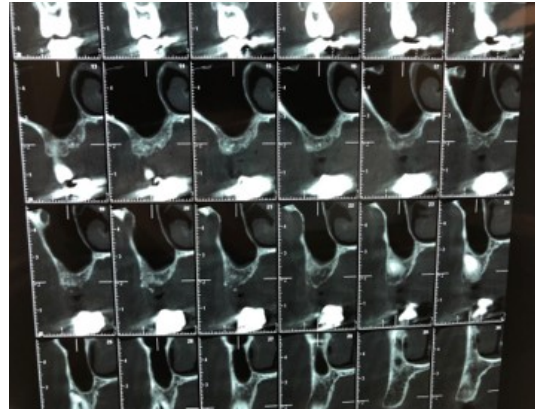
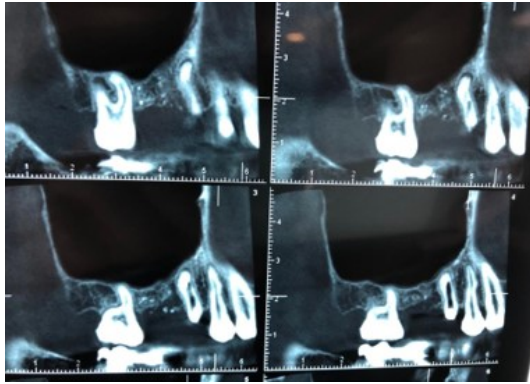
The exposed graft is covered by Collagen sponge secured in place by suturing



Clinical appearance with collagen sponge secured in place



Radiographic appearance day one After graft placement



CBCT after the first healing stage,  
before crestal sinus elevation  
approach







Mid crestal incision, site exposure and osteotomy preparation for crestal sinus elevation





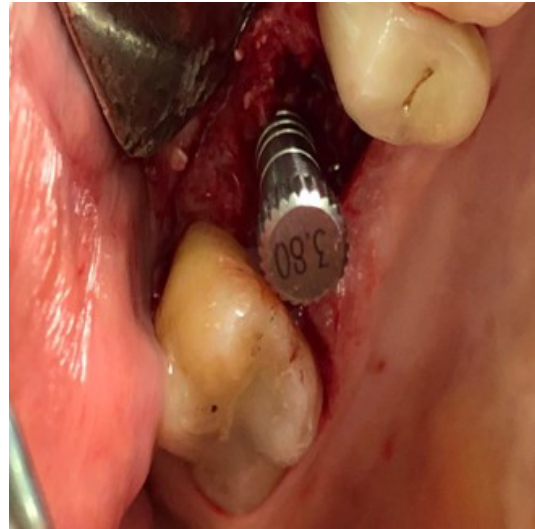
Bond Apatite is ejected into a sterile dish and left to harden for 3 minutes



After 3 minutes Bond apatite® semi hard block is crushed into small particles and reloaded into bone carrier syringe



The graft is injected into the osteotomy and pushed by osteotome to elevate the Sinus membrane



Implant was placed after elevation of the sinus membrane







Do you have questions about Dr. Berg surgery that you would like to direct him?

email him: [experts@augmabio.com](mailto:experts@augmabio.com)

or

Join our Community chat on [What's app](#)

[Click here to our previous newsletters](#)