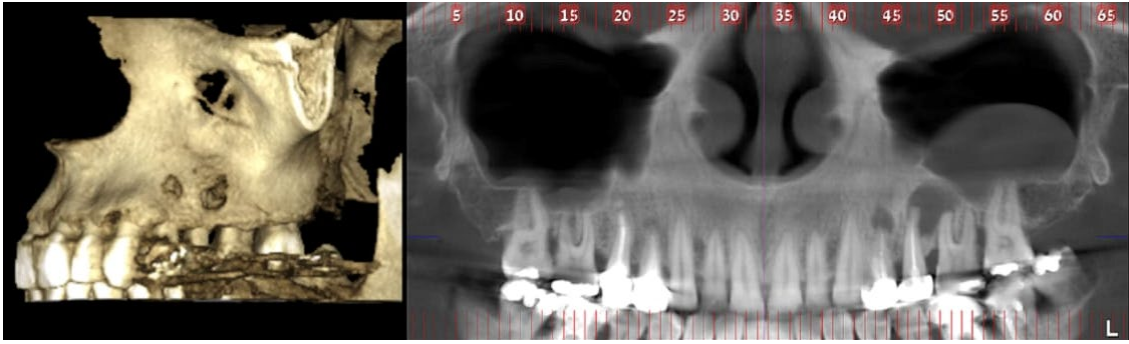


Clinical Case Study - November 2018

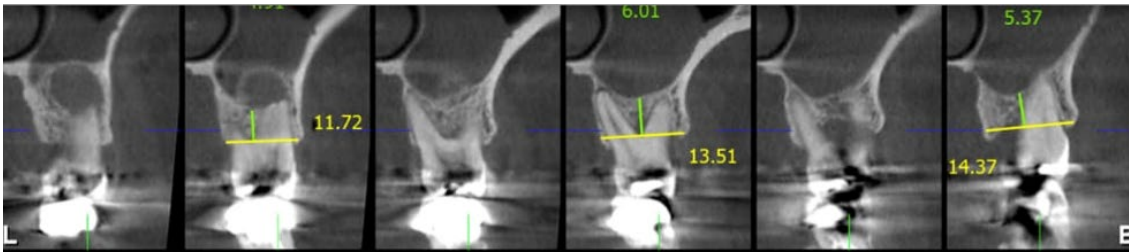
Augmentation post Extraction and cyst enucleation using Bond Apatite® cement

Surgery by: Dr. Ganaiem Tamer

- In the following case 50 years old female patient presented with a large maxillary radicular cyst in the apical portion of 13,14 (25,26) and periapical lesion in 12(24).
 - After minimal flap reflection according to Bond Apatite ® protocols, the teeth 12,13,14 (24,25,26) were extracted and complete debridement was performed by removing the granulation tissue and enucleating the cyst. Then followed augmentation with Bond Apatite® bone cement. Soft tissue closure was with tension and not tension free, as recommended by Bond Apatite ® protocols.
 - Healing was uneventfully, and complete bone regeneration was achieved. Six months post op implants were placed.
-



Pre op CBCT

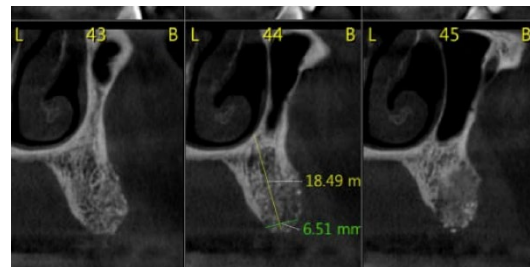
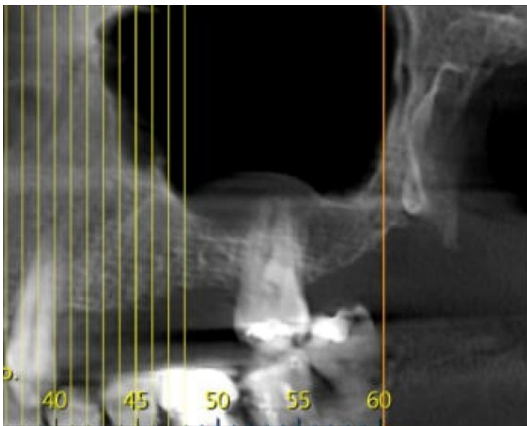




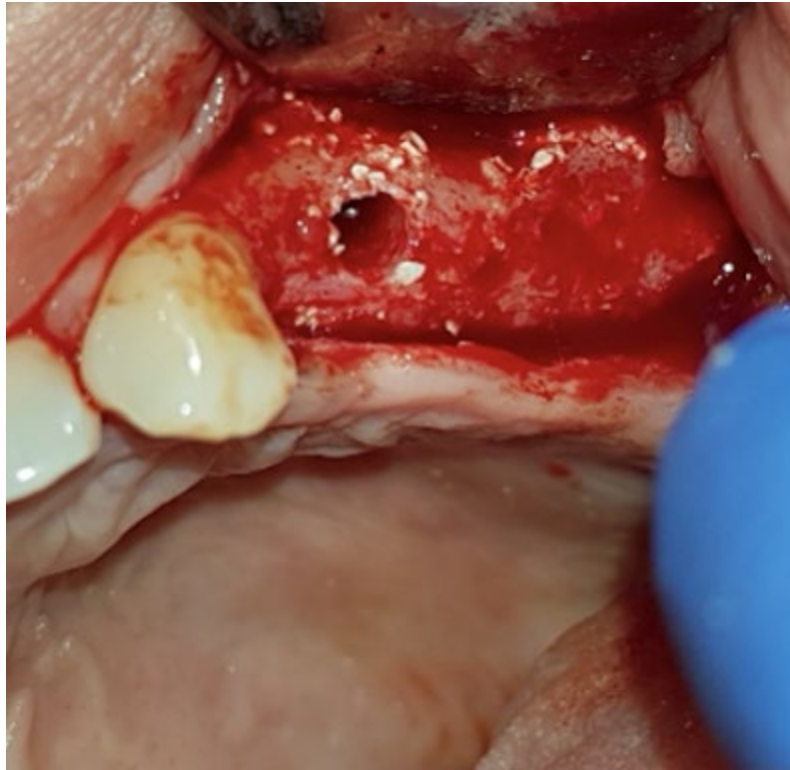
Clinical appearance after extraction and ridge preparation for augmentation.



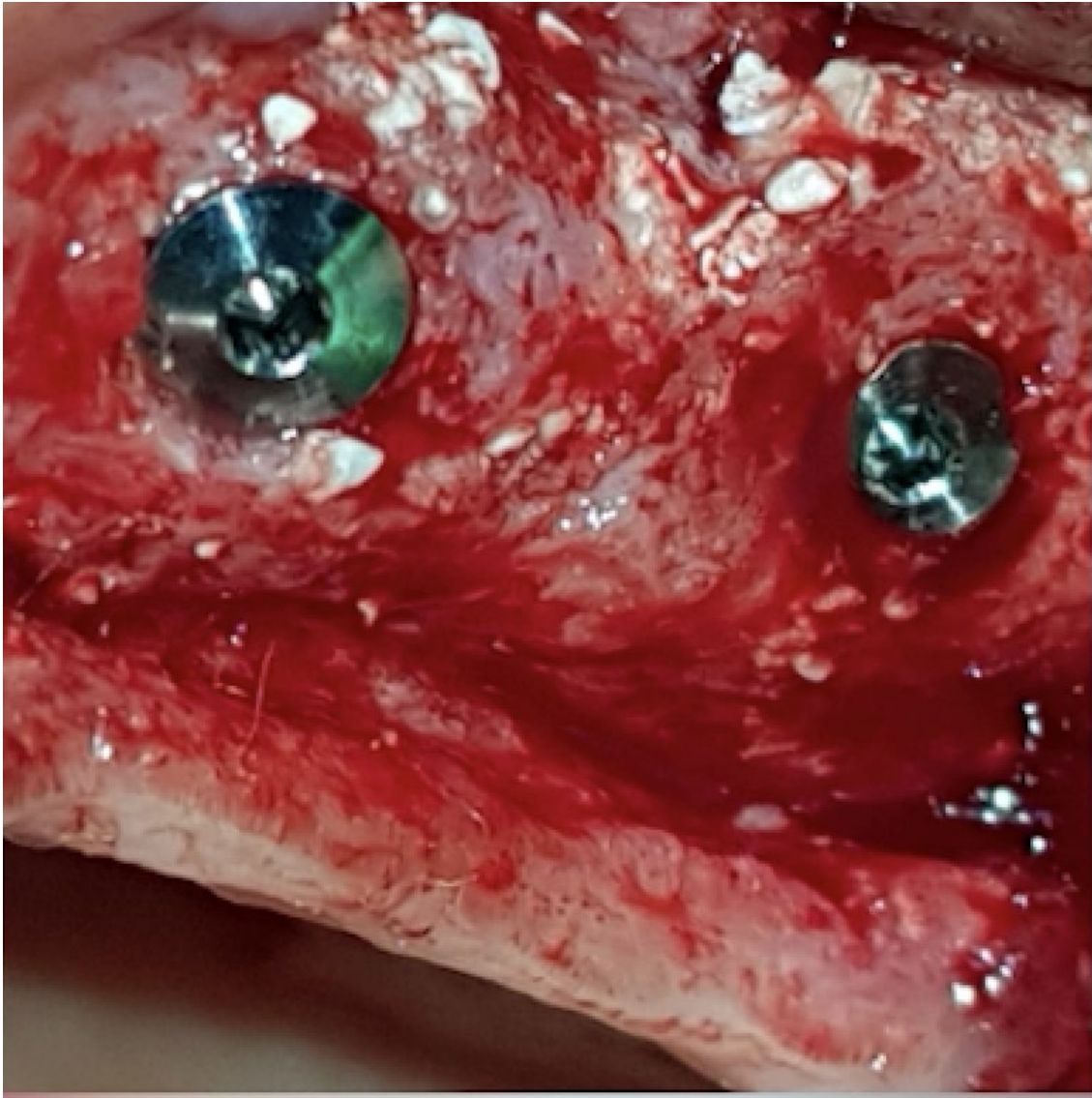
Bond Apatite cement is placed in the host site.



Six months post augmentation



Clinical appearance at the time of implant placement



Immediately after implant placement