

NEW! Protocols in animation videos

Bond Apatite® protocol for lateral augmentation



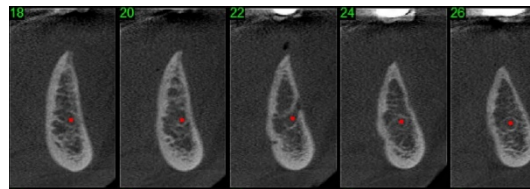
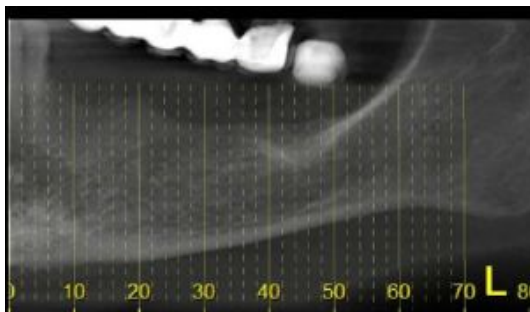
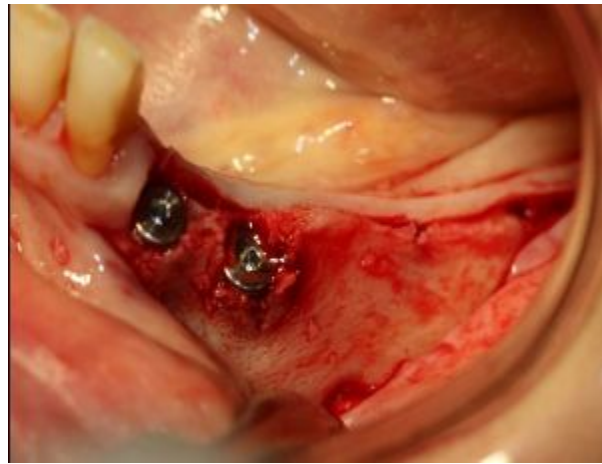
ABCA experts sharing cases

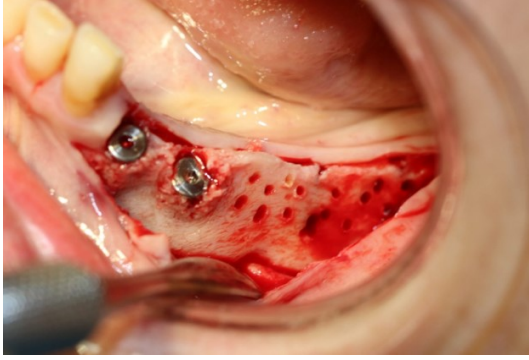
David Baranes DMD , France/ Israel

A 60 year old female patient presents to the clinic for a mandibular left non-removable implant supported restoration. Examination reveals a narrow alveolar crest that will not accommodate implant placements in the molar area. It was decided to perform a ridge

augmentation initially and after a few months of healing to proceed with placement of implants.

Minimal flap reflection was performed in order to exposed the host site. Adequate bone width in the anterior segment permitted placement of two implants. At the posterior segment, buccal decortication was performed and lateral augmentation was done with Bond Apatite. Closure was done without periosteal releasing incisions or membrane placement. The flap was instead stretched and sutured according to the bond apatite protocols.





Soft tissue healing

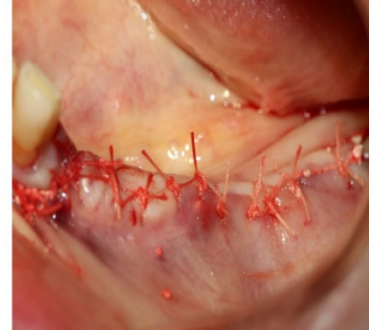
14 weeks post op



7 days post op



Day 1



14 weeks post op

